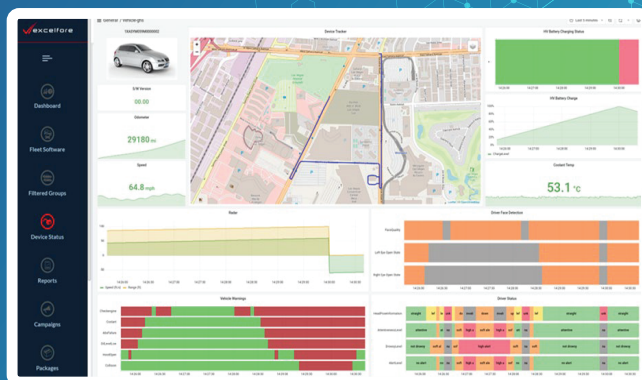





SDVconnect

Telematics and Deep Data


Powered by eDatX




eDatX from Excelfore

-  The eDatX™ data platform ingests, aggregates, stores and uploads data from diverse devices in the vehicle, providing a manageable and accessible body of data from thousands of vehicles in the cloud.
-  Data from the connected car need not be an all-or-nothing proposition. eDatX uses over-the-air updates to rules, policies and configurations for data organization, data reduction, and data retention.
-  eDatX seamlessly integrated with the eSync data pipeline to manage the flow of data from all electronic devices across any number of vehicles, driving learning cycles and data monetization opportunities in automotive and related industries.


Data Ingestion

-  In-vehicle data management begins with the data ingestion process. eDatX uses a standardized data pipeline with distributed agents to gather data from any device in the vehicle. Rules for configuration, tagging and topics can be programmed over-the-air.

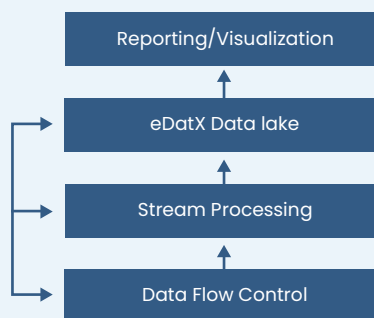
Rolling Buffers

-  Provides an in-vehicle “black box” with full data for up to 60 seconds, which can be stored and uploaded based on programmable triggers or commands.

Data Reduction

-  Programmable rules drive statistical and logical reductions of 2-3 magnitudes (typical) for streaming or storage for later bulk upload.

eDatX Data Platform



Cloud In Vehicle

eDatX Service

